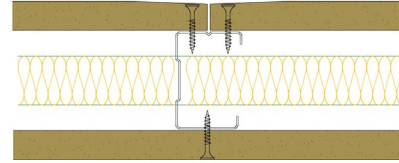


50-K-52(25) - SPEEDLINE System Data Sheet - Version V1 (24-10-23)

SPEEDLINE 50mm 'C' Stud Partition @600mm Ctrs,
with Knauf 15mm Wallboard each side, 25mm APR



System Performance Breakdown

Fire Resistance:

BS476 Part 22:1987:

Test Ref & Date or Applied Ref & Report:

Max Height:

Thickness:

Duty Grade: BS 5234: Part 2:1992:

Sound Insulation:

30/30 Minutes (Integrity/Insulation).

BTC 17436F - BRE Report P102396-1011B

Refer to Speedline Specification Clause

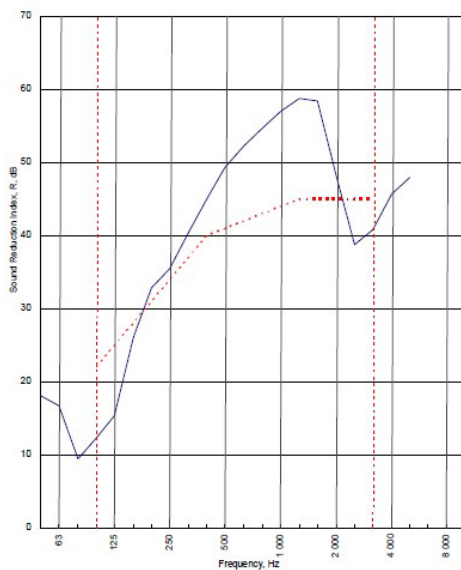
82 mm. (At Base Track, Excluding Finishes)

Heavy - Annexes A-F

41 R_w dB, Date Tested or Assessed Against - 16/06/2011

Test Code:
H17386EA
Test Date:
16/06/2011

Freq. Hz	R dB
50	18.0
63	16.7
80	9.4
100	12.2
125	15.3
160	26.0
200	32.8
250	35.5
315	40.4
400	45.0
500	49.3
630	52.3
800	54.7
1 000	57.0
1 250	58.8
1 600	58.4
2 000	48.1
2 500	38.7
3 150	40.8
4 000	45.7
5 000	48.0
6 300	
8 000	
10 000	



----- Curve of reference values (ISO 717-1)

Rating according to BS EN ISO 717-1:1997	R_w (C;Ctr) = 41 (-4;-11) dB		
Evaluation based on laboratory measurement results obtained by an engineering method:	C_{50-150} = -5 dB	C_{50-500} = -4 dB	$C_{100-500}$ = -3 dB
	$C_{9,50-150}$ = -14 dB	$C_{9,50-500}$ = -14 dB	$C_{9,100-500}$ = -11 dB

TESTED AT ONE OF THE UKAS ACCREDITED LABORATORIES BELOW

- B.T.C (H-Ref on Graph)
- B.R.E
- AIRO
- S.R.L

Customer: Metsec plc Hepsec Division

BTC 17409A: Page 9 of 11

